



# CWI TECH-MESH™



**KNITTED  
MESH  
PRODUCTS**

☎ 800-325-5861  
🖱 [centralwire.com](http://centralwire.com)  
✉ [sales@centralwire.com](mailto:sales@centralwire.com)





## DRAWING ON INNOVATION

With our constant innovation, commitment to quality, and outstanding service, Central Wire Industries is proud to be your trusted leader in the wire and cable industry. Our wide ranging products of high-performance specialty alloys in nickel, stainless, and red metals are found in mission critical applications around the world.

### TOP QUALITY

We are trusted across the globe in mission critical applications for one reason: our commitment to quality. Our mature quality systems, including ISO 9001, AS9100, and ISO 13485, attest to the rigorous systems we have created to maintain quality.



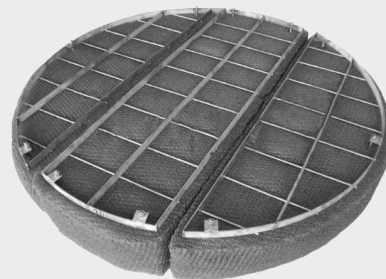
### QUICK LEAD TIMES

With 13 manufacturing facilities across the globe, we have the capacity to turn orders quickly while maintaining the quality standards you expect. Don't assume it can't be done, contact us today for your delivery requirements.



### YOUR SPECIFICATIONS

Our engineering and production teams have the processes and experience to build to your specifications time and time again. Looking for something more? We can assist with that as well. Send us your designs and we will make it happen for you.



### THE RIGHT WIRE GRADE FOR YOUR SPECIFIC DEMISTER APPLICATION

CWI Tech-Mesh™ is knitted on state-of-the-art equipment under strict quality control processes to maximize separation efficiency and minimize pressure drop. Whether the process is mist elimination or oil coalescing, CWI offers mesh pad options in a variety of wire grades, diameters, alloys, mesh densities, and product geometries. Our knitted wire mesh and demister pads are manufactured at both our Houston, Texas and Calgary, AB locations.

## QUALITY ASSURANCE

**CWI engineered products are tailored to your requirements to ensure that your process is optimized and the products last.**



Meeting exact customer product dimensional, ductility, and performance specifications requires specialized alloy selection and engineered manufacturing. CWI Tech-Mesh™ can be manufactured in a wide range of wire diameters, alloys, mesh densities, and product geometries under precise production and processing equipment capabilities. CWI produces the core products in-house that comprise the final product including wire, support rods, and welding wire.

**CWI's engineering team is capable of producing a wide array of product configurations and geometries to your exact specifications:**

- Drawing wire to exact size diameter
- Knit configuration setup
- Crimped for correct mesh density construction
- Engineering and fabrication consultation services
- Mechanical wire testing measures tensile strength, yield strength, and elongation
- Microscopy evaluation for alloy grain structure and surface quality
- Engineering and manufacturing process step checks
- Final product through inspection
- Fast, reliable shipping, customized inventory and delivery programs
- Customer service: in-person, online or over the phone



### CUSTOM MIST ELIMINATORS / DEMISTER PADS

- CWI Tech-Mesh™ demister pads are engineered and fabricated for specific process conditions.
- Densities typically range from 5.0 to 12.0 lb/ft<sup>3</sup>.
- The industry standard size wire for mist eliminators is 0.011 inches (0.28 mm).
- Mist eliminators are customized specifically to meet each customer's specifications and equipment geometry.
- Mist eliminators are configured to ensure minimum liquid entrainment at maximum flow conditions.



CWI Tech-Mesh™ is a versatile product able to be used in a wide array of industries. From oil and gas to food and beverage, our finished demister pads, bulk mesh, and wire mesh filters can be customized according to your preferred mesh density and alloy selection. Planning a plant shutdown for turnaround season? We can help. Central Wire Industries always prioritizes quality and performance above all else, which is why our products are always manufactured using material sourced from our own facilities across the United States.

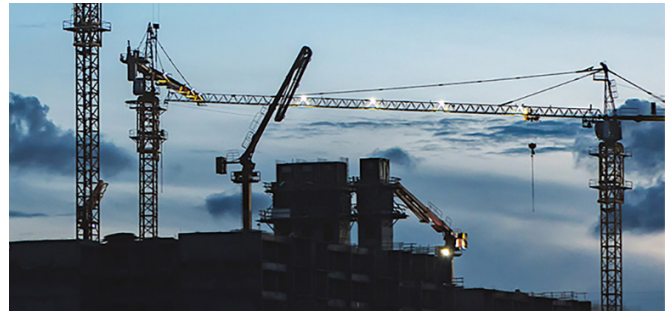


### OIL AND GAS

Demister pads / mist eliminators require little maintenance, have no moving parts, and withstand exposure to corrosive environments. This is why they are a staple within refinery towers. CWI Tech-Mesh™ helps remove liquid mist from exhaust streams by coalescing liquid droplets and allowing clean vapor to rise.

### FILTRATION

In its simplest form, knitted wire acts as a filter. With the ability to process a wide range of liquids and gases, our stainless steel and specialty alloy pads can assist with chemical processing, water treatment, and more.



### ENVIRONMENTAL

Knitted wire mesh filters are often used to control air pollution. It traps and manages potentially hazardous mist, while still allowing clean vapor to rise. From oil mist to sulphuric acid, CWI Tech-Mesh™ helps manage toxic material without inhibiting processing efficiency.

### FOOD & BEVERAGE

CWI understands the importance of quality when it comes to maintaining a safe and sanitary processing area, which is why our stainless steel CWITech-Mesh™ is a staple for managing cooking oil and other liquids. Alloys like copper have antimicrobial properties, aiding in food and beverage production.



CWI Tech-Mesh™ has the engineering capabilities to help customers fabricate the right solution for their particular application, not just manufacture to predetermined specifications. With all our core products produced in-house, we can offer full support when choosing the right wire grade for your exact requirements.

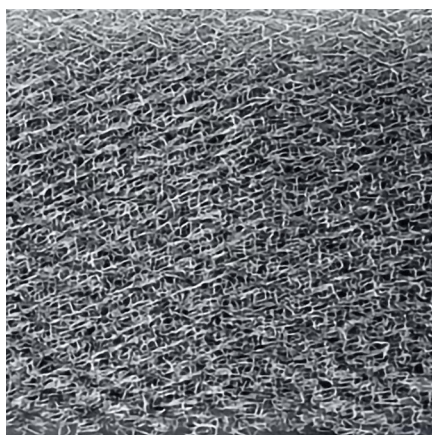


## DEMISTER PROCESS APPLICATIONS

- Gas-Liquid Separators
  - Distillation Equipment
  - Process Absorbers, Precipitators, and Scrubbers
  - Chemical Separators and Extractors
  - Oil and Gas Processing
- Equipment
- Combustion Gas Scrubbers
  - Knockout Drums and Receivers
  - Refinery Towers
  - Liquid-Liquid Coalecers
  - Pollution Control Equipment
  - Two-Phase Eliminators
- Liquid Entrainment for Compressor Equipment
  - Product Recovery Systems
  - Meat Processing
  - HVAC Systems



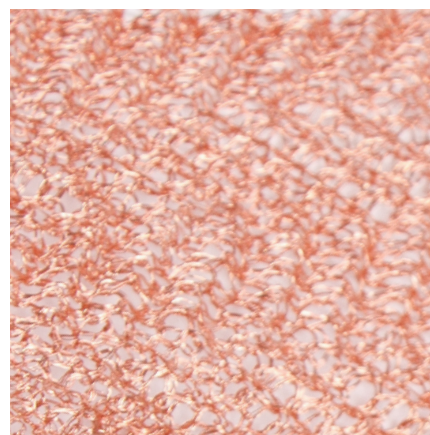
## STAINLESS STEEL



## SPECIALTY NICKEL ALLOYS



## COPPER





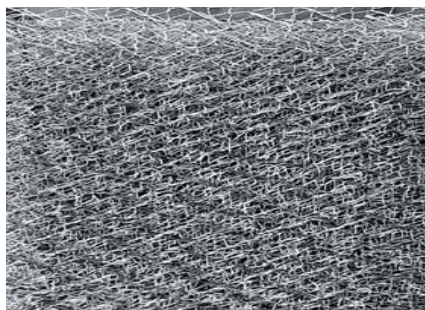
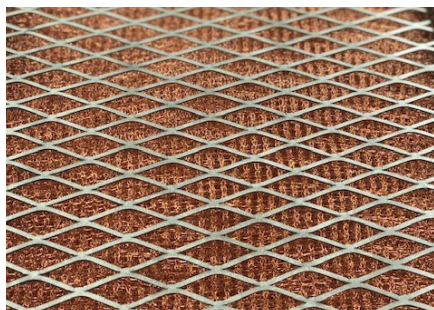
CWI has the widest range of alloys available on the market. Specialty alloys, co-knits, and other custom orders are always available upon request.

Alloy	UNS	C	Mn	P	S	Si	Cr	Ni	Mo	Cb	Ti
304	S30400	0.08	2.00	0.045	0.030	1.00	18.00 - 20.00	8.00 - 10.50			
304L	S30403	0.03	2.00	0.045	0.030	1.00	18.00 - 20.00	8.00 - 12.00			
316	S31600	0.08	2.00	0.045	0.030	1.00	16.00 - 18.00	10.00 - 14.00	2.00 - 3.00		
316L	S31603	0.030	2.00	0.045	0.030	1.00	16.00 - 18.00	10.00 - 14.00	2.00 - 3.00		
317L	S31703	0.03	2.00	0.045	0.030	1.00	18.00 - 20.00	11.00 - 15.00	3.0-4.0%		
321	S32100	0.08	2.00	0.045	0.030	1.00	17.00 - 19.00	9.00 - 12.00			5xC Min.
347	S34700	0.08	2.00	0.045	0.030	1.00	17.00 - 19.00	9.00 - 13.00		10xC Min.	

Alloy	UNS	C	Mn	P	S	Si	Cr	Ni	Mo	N	Cb	V	Cu	Fe	Al	Ti	Additional Elements
Alloy 20	N08020	0.07	2.00	0.045	0.035	1.00	19.00 - 21.00	32.00 - 38.00	2.00 - 3.00		8xC - 1.00		3.00 - 4.00	Rem.			
2205	S32205	0.030	2.00	0.030	0.020	1.00	22.0 - 23.0	4.50 - 6.50	3.00 - 3.50	0.14 - 0.20							
400	N04400	0.3	2.00		0.024	0.50		63.00 - 70.00					Rem.	2.50			
600	N06600	0.15	1.00		0.015	0.50	14.00 - 17.00	72.0 Min.					0.50	6.00 - 10.00			
601	N06601	0.1	1.0		0.015	0.50	21.0 - 25.0	58.0 - 63.0					1.0	Rem.	1.0 - 1.7		
625	N06625	0.10	0.50	0.015	0.015	0.50	20.0 - 23.0	Rem.	8.0 - 10.0		3.15 - 4.15			5.0	0.40	0.40	
718	N07718	0.08	0.35	0.015	0.015	0.35	17.0 - 21.0	50.0 - 55.0	2.80 - 3.30		4.75 - 5.50		0.30	Rem.	0.20 - 0.80	0.65 - 1.15	B: 0.006 Max, Co: 1.00 Max
825	N08825	0.05	1.0	0.03	0.03	0.5	19.5 - 23.5	38.0 - 46.0	2.5 - 3.5				1.5 - 3.0	Rem.	0.2	0.6 - 1.2	
C276	N10276	0.02	1.0	0.030	0.030	0.08	14.5 - 16.5	Rem.	15.0 - 17.0			0.35		4.0 - 7.0			Co: 2.5 Max, W: 3.0 - 4.5
Ni 200	N02200	0.15	0.35		0.010	0.35		99.0 Min.					0.25	0.40			

Alloy	UNS	Cu	Pb	Zn	Fe	P	Ag	As	O <sub>2</sub>	Sb	Te
C101	C10100	99.99 (Min)	0.0005	0.0001	0.0010	0.0003	0.0005	0.0005	0.0005	0.0004	0.0002
C102	C10200	99.95 (Min)							0.0010		
C110	C11000	99.90 (Min)									

\*All elements maximum limits unless otherwise stated



## WHAT ARE SOME OF THE ADVANTAGES OF USING A KNITTED MESH MIST ELIMINATOR?

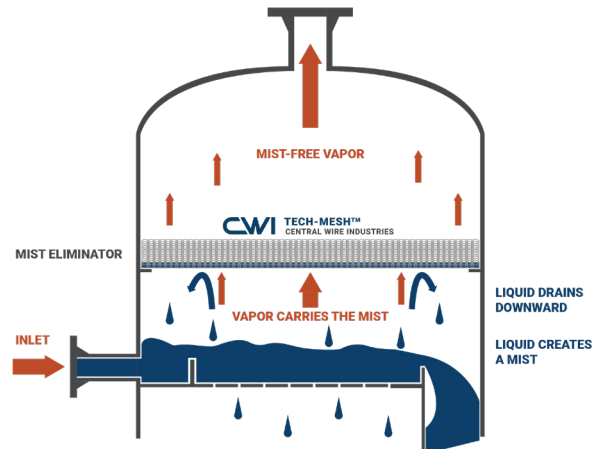
Tech-Mesh™ mist eliminators are a low-cost option that provides excellent removal efficiency over a wide range of conditions.

## WHY ARE SOME MIST ELIMINATORS MADE FROM MULTIPLE SEGMENTS?

Mist eliminators are often installed through narrow manways. Therefore, large pads are often split into multiple sections to accommodate the space restriction. The size and quantity of mesh segments are determined by the available space, and overall dimensions of the pad itself. Multiple sections are not necessarily required for smaller pads that can be carried through a manway in one piece.

## WHAT IS A KEY INDICATOR THAT A MIST ELIMINATOR SHOULD BE REPLACED?

Make note of the clean start-up pressure drop across the unit. An increase in pressure drop would indicate flooding or fouling. A decrease in pressure drop would indicate some mesh is missing due to corrosion or a high pressure episode.



## CAN A PLUGGED OR FOULED MIST ELIMINATOR BE CLEANED?

To some degree, it depends on what is causing the issue. Some solids can be dissolved while others are less prone to removal. If the mesh structure is compromised, it is time for a replacement.

## CAN CWI HELP ME SELECT THE CORRECT MESH THICKNESS AND STYLE?

CWI engineers can assist with recommendations once the operating conditions and flow rates are understood.

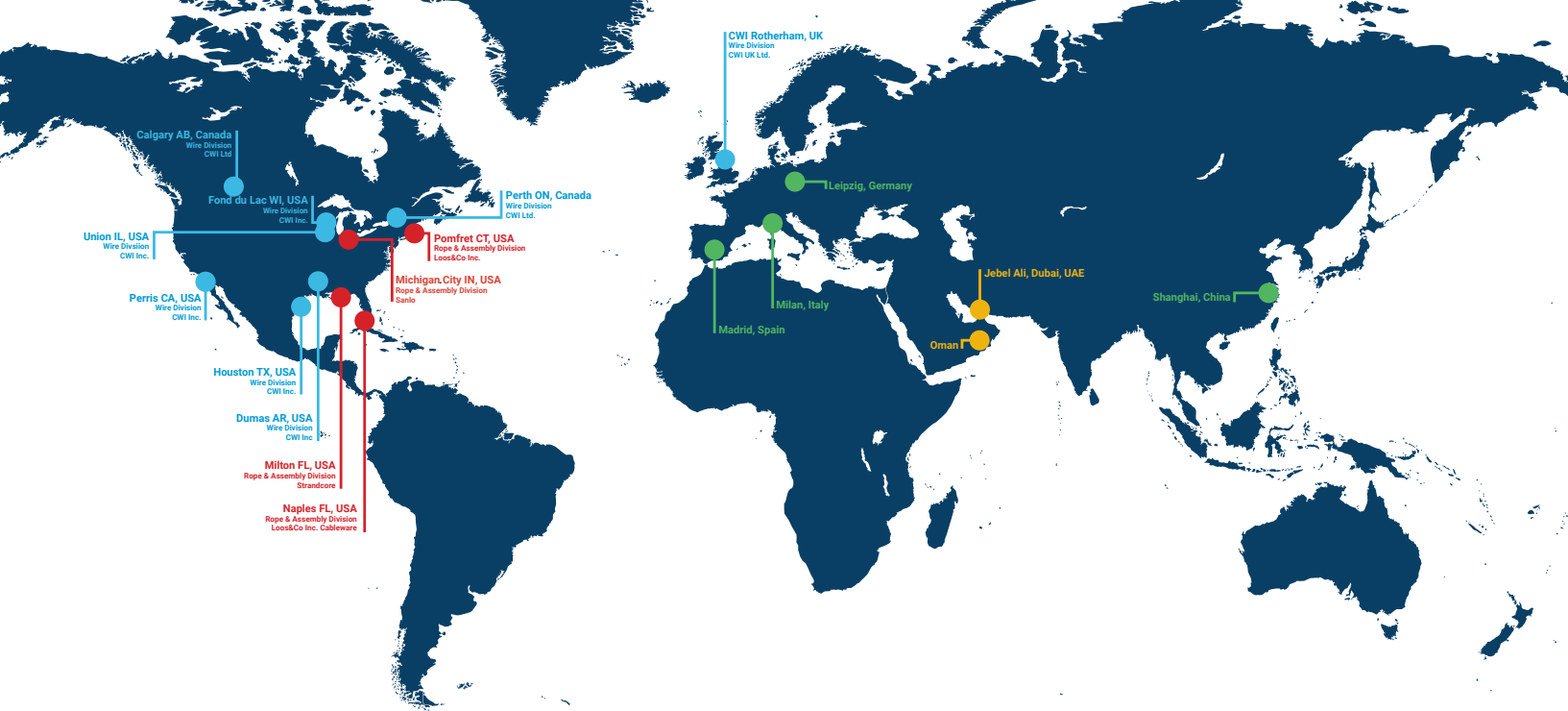
## I HAVE A QUESTION. WHO DO I CONTACT?

Contact our sales team directly by email at [sales@centralwire.com](mailto:sales@centralwire.com) or by phone at 1-800-325-5861. Submit a general inquiry or request for quotation on our contact page at [cwitech-mesh.com](http://cwitech-mesh.com)



## I'M PLANNING TO PERFORM ROUTINE MAINTENANCE ON MY PROCESSING EQUIPMENT. DO YOU PRODUCE WELDING CONSUMABLES?

In addition to a full line of knitted wire mesh and mist elimination filters, Central Wire Industries also offers Generation 4™ welding wire and rod. Planning turnaround repairs or a plant shutdown and seeking an alternative to simplify your purchasing process? Look no further than Central Wire Industries. By ordering all your turnaround supplies from CWI, you can reduce downtime, perform maintenance all at once, and work confidently knowing you are receiving only the highest quality products from a trusted manufacturer. Visit [www.centralwire.com](http://www.centralwire.com) for additional information about our Generation 4™ welding consumables.



## CANADA

### Ontario

+1-613-267-3752  
1 North Street  
Perth, Ontario K7H 2S2

## UNITED KINGDOM

### Rotherham

+44-(0)-1709-37-6625  
Primrose Park, Greasbrough Rd,  
Rotherham, S. Yorkshire S60 1RH

## UNITED STATES

### Arkansas

+1-870-382-2980  
1020 Highway 65 South  
Box 186  
Dumas, AR 71639

### California

+1-951-657-2105  
2500 South "A" Street  
Perris, CA 92570

### Illinois

+1-800-435-8317  
6509 Olson Road  
Union, IL 60180-0423

### Wisconsin

+1-920-926-0609  
1795 South Hickory Street  
Fond Du Lac, WI 54937

## TECH-MESH™ MANUFACTURING FACILITIES



### Houston, Texas

800-325-5861  
18430 Kieth Harrow Blvd,  
Houston TX 77084



### Calgary, Alberta

+1-613-267-3752  
162-5255 McCall Way NE  
Calgary, Alberta T2e 7j5

**CWI GD™ - SUPA® SLICKLINES**

**CWI GEN® WELDING**

**CWI TECH-MESH™**

[www.centralwire.com](http://www.centralwire.com) | [www.centralwire.co.uk](http://www.centralwire.co.uk) | [www.slicklines.com](http://www.slicklines.com) | [www.cwitech-mesh.com](http://www.cwitech-mesh.com)

**CWI** GROUP OF COMPANIES